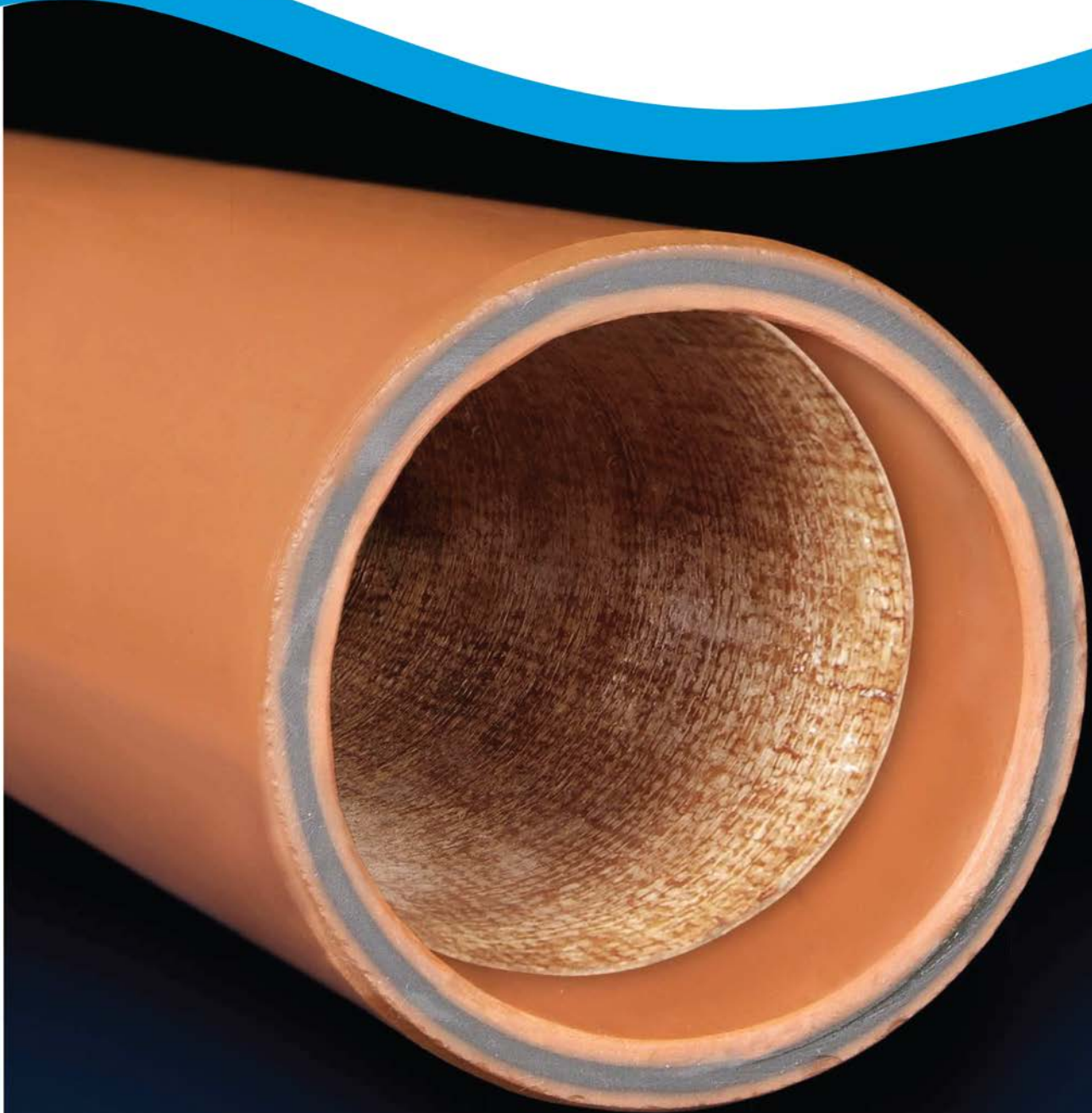




Interpatch®

Section Pipe Repair



Interpatch®

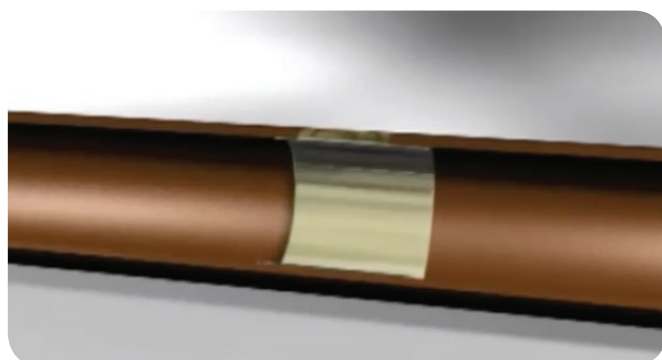
Cracks and leaky joints can cause localised damage to gravity sewers and stormwater pipes. Although the initial damage may be localised, if the damage is not repaired, it can lead to pipeline collapse and environmental degradation.

Interpatch is an effective 'no-dig' solution for repairing and sealing damaged sections of pipe, and is a cost-effective alternative to traditional 'dig and replace' techniques and where relining the entire pipe is not economical.

Interpatch consists of glass fibre reinforced matting, which is impregnated with a fast-curing resin. The glass fibres give Interpatch high strength and stiffness and enables it to act as a stand-alone structural fitting if required.

Installation is performed by using an inflatable packer to move the Interpatch to the repair location from the nearest manhole. The packers are available in a range of sizes and are fitted with flow-through tubes to enable installation during live flows. In most cases, this eliminates the need for bypassing and/or the risk of sewage backing up during installation.

Interpatch can be installed in pipe diameters from 100mm to 750mm and bonds to common pipe materials including PVC, vitreous clay, cast iron, concrete and asbestos cement.



Fast cure

In common pipe diameters between 100mm and 300mm the resin cures in as little as 45 minutes, even underwater. The faster cure time means installation is quicker, safer, lower risk and less disruptive to nearby residents and traffic.

In larger pipe sizes the resin offers an optimum balance between fast cure and long pot-life to ensure low-risk, successful installations.

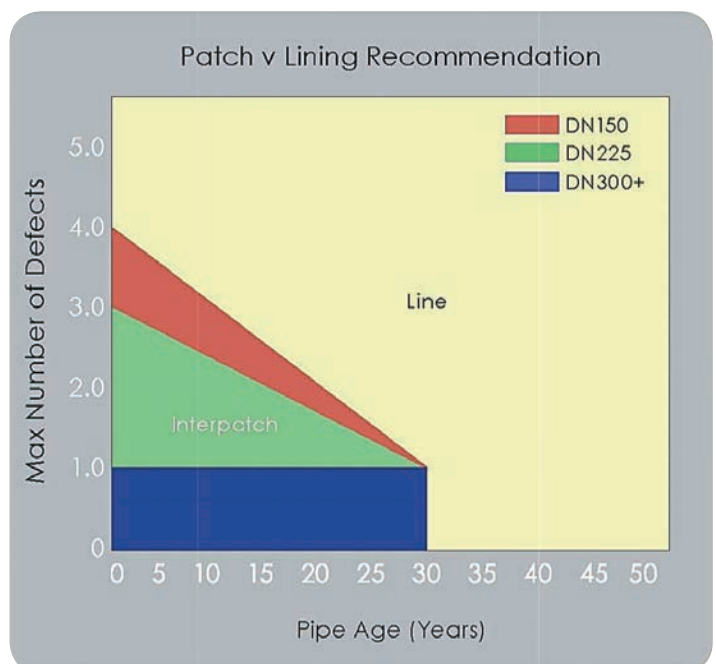
Structural fitting

Interpatch has been designed to be a structural component as well as a seal. The glass fibres give Interpatch high strength and stiffness. Interpatch is typically installed with a strength equivalent to that of a stand-alone pipe. The high stiffness means that the strength can be obtained from a relatively thin wall.

The thickness and strength of Interpatch is achieved by layering sheets of fibreglass. Therefore, Interpatch can be tailored to meet a variety of situations by adjusting the number of layers. A standard repair length is 1.2m, although longer sections can be repaired by overlaying successive patches.

Value for money

Installing Interpatch to repair a damaged section of pipeline can be an ideal, cost-effective solution. However, if the pipeline requires several patches and does not have many years of service life left, relining the entire pipe may be a more economical solution. Interflow has the expertise and product range to recommend solutions that represent the best value.



Interflow is Australasia's leading pipeline renewal contractor and services the market with the highest value products that offer all-round benefits.

Interpatch is one such product. It is fast curing and provides a strong, structural fitting and seal so is an ideal solution for repairing damaged sections of pipe when lining the entire pipeline is not economical.

The environment

Interpatch improves the environment by repairing and sealing damaged sections of pipeline, which stops leaks and reduces infiltration into the sewer network, and avoids unnecessary excavation of the surrounding ground.

The installation can be performed during live sewer flow, reducing the risk of sewage backing up and overflowing.

Interpatch is suitable for long-term use in sewer applications without any adverse effect on the environment. In addition, the Interpatch silicate resin contains 50 per cent less fossil fuel-based materials than alternative resins. The resin is pre-packaged in either sealed recyclable cartridges or bottles, which reduces the risk of resin spills. This ensures a safe and clean work site, and makes disposal easy.



Community

Interpatch has been developed with the community in mind.

The equipment required for installation is minimal and is compact enough to be installed from existing access chambers. This results in a small site footprint and less disruption during installation.

The resin has been developed to cure quickly in ambient conditions, which reduces the amount of time required for installation.



Safety

Ensuring safety for its staff and the community is central to all aspects of Interflow's business.

Interpatch is a safe product that is easy to install. The resins used are non-toxic and, because no excavation is required, there is no heavy machinery working on-site.

Interpatch®

Sectional pipe repair
from the leaders
in pipeline renewal

Experience

Interpatch is a proven product, which Interflow has been successfully installing since 1998.

Effective spot repair solutions are an important component of effective sewer renewal. Sewer and stormwater pipes come in a variety of sizes, lengths, ages and conditions, and whether to perform a spot repair or renew the entire pipeline depends on all these factors. Interflow is equipped with the expertise and experience to recommend the most appropriate and best-value solution.



Testing

Interpatch has been comprehensively tested to confirm its material properties, structural properties and long-term performance in sewer environments.

► Interpatch has been tested against relevant ASTM standards for:

- Tensile strength
- Adhesion
- Abrasion resistance
- Impact resistance
- Chemical resistance
- Young's Modulus
- Stiffness
- High-pressure cleaning resistance

Interflow is committed to quality, so you can be assured that your infrastructure has been repaired to the same standards that we install our liners to.



Interflow®

Interflow Pty Limited

Sydney - Head Office

254 Toongabbie Road
Girraween NSW 2145, Australia

Ph +61 2 9631 2444
Fax +61 2 9636 5475

Email: mail@interflow.com.au
Website: www.interflow.com.au

New Zealand

18 Anvil Road
Silverdale 0932, New Zealand

Ph +64 9 443 7209

Website: www.interflow.co.nz