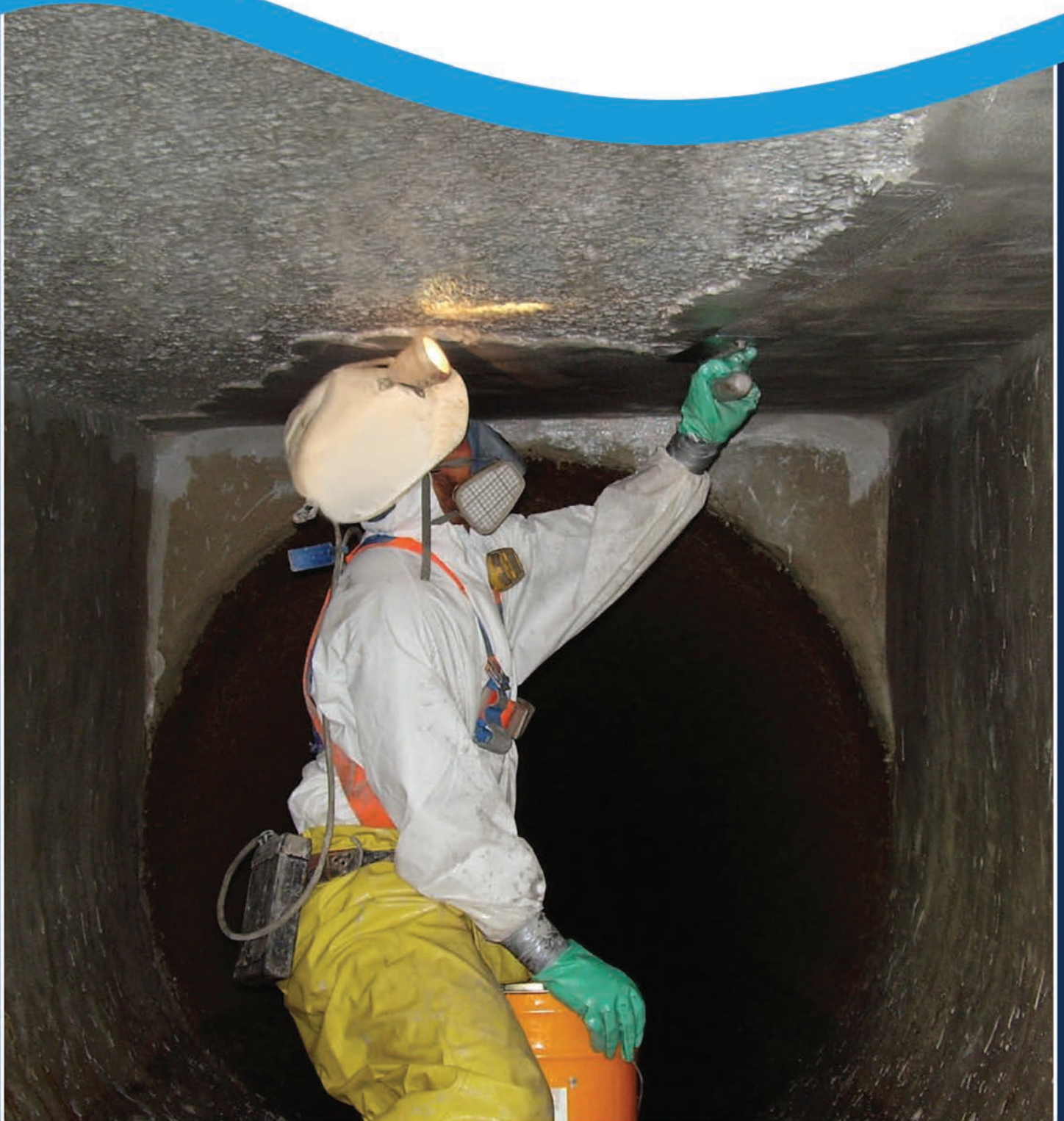




Interchem® R

Renewal of Deteriorated Access
Chambers and Structures



Interchem® R

Access chambers and underground sewer structures that are highly deteriorated from gas attack may also have some structural loss. These structures require more than just a protective coating; surface repair and structural restoration is necessary.

The Interflow suite of coating products, Interchem®, was developed for in situ protection and renewal of sewer structures, without the need for costly and disruptive civil works.

Interchem R (denoting Rebuild) is a high-build general-purpose epoxy mortar that is used to rebuild severely gas attacked surfaces and restore the structural integrity of the access chamber.

Interchem® is a single-stage application; there is no need to apply a separate primer or a top-coat, making application quick and easy. Interchem R is applied by trowel and float finished to a typical thickness of 20mm. The finished product is strong, tough, hard-wearing and resistant to chemical attack.

The coating is specifically suited to common mineral substrate materials such as concrete, limestone masonry and brickwork. Provided there is a man-entry access, there is no restriction on the type, size, shape or depth of structure that can be treated with Interchem R.



The epoxy advantage

Interchem R is an epoxy-based product. The advantages of epoxy compared to conventional cementitious products are:

- Tensile strength
- Adhesion
- Abrasion resistance
- Impact resistance
- Chemical resistance
- Young's Modulus
- Stiffness
- High-pressure cleaning resistance

This means longer service life and a high-quality restoration solution is specifically suited to harsh sewer environments and will be longer lasting than other alternatives.

Single stage application

Interchem® is a specially formulated epoxy mortar, which is quickly and easily applied in one stage. Interchem R is an all-in-one primer, epoxy mortar, and protective coating, which provides:

- Strong adhesion to the substrate
- A 20mm thick, high strength, structural rebuild
- High level of protection against chemical attack and abrasion

Easy to apply

Interchem R is suitable for use on a range of sewer structures and surfaces, including for localised patch repair.

The epoxy resin components are supplied in pre-portioned sealed pails, which makes mixing quick and easy.

Interchem R is easy to apply with a trowel and can be used to coat intricate and difficult-to-reach areas. It forms a strong initial bond to the substrate and has non-sag properties, so thick coats can be quickly applied to overhead and vertical surfaces.

The environment

Interchem R improves the environment by sealing structures, thereby reducing groundwater infiltration into the sewer network and keeping the sewage inside the structure.

By restoring the structural integrity of deteriorated surfaces, Interchem R can potentially reduce the risk of environmental damage caused by the collapse of deteriorated sewer structures.

Being epoxy based, Interchem R is resistant to chemicals and less likely to crack in the presence of ground movement. This means it is expected to have a longer service life than cementitious repair methods.

Epoxy products such as Interchem R are widely used in sewer applications throughout the world and have no known adverse effect on the environment. The resins used are solvent free and non-toxic.

Community

Interchem R can cost-effectively rebuild the deteriorated surfaces of sewer structures before extensive structural rectification is required. Any subsequent structural repairs are likely to require expensive civil works and cause significant disruption to the community.

The Interchem R restoration process is completely non-disruptive and applied in situ. The size of the footprint on site is small, resulting in less disruption to local traffic and residents.

In most circumstances, the installation can be performed with flow in the pipe, so there is no interruption of the sewer service and bypassing is usually not required.

Safety

Ensuring safety for its staff and the community is central to all aspects of Interflow's business and Interchem R has been developed accordingly. With minimal installation machinery required on site, and with the work being performed by operators below ground, the process is low-risk, quiet and safe.

The resin components are supplied in pre-portioned sealed tubs, which makes resin mixing and disposal easier, cleaner and safer.



Interchem® R

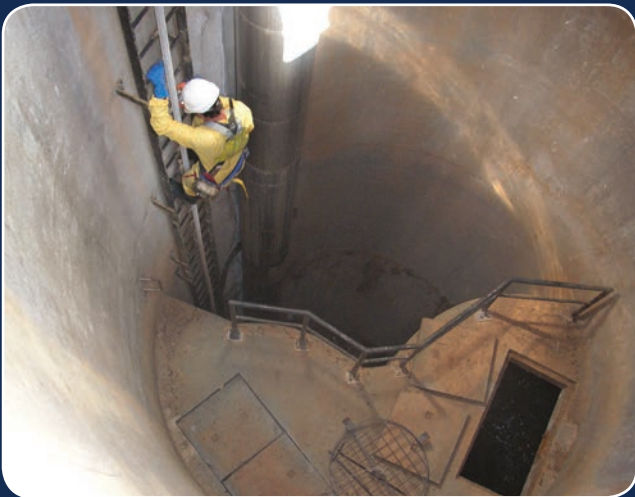
Renewal of deteriorated access to chambers and structures from the leaders in pipeline renewal

The epoxy materials used in Interchem R were originally formulated in Europe over 15 years ago and, since then, have been used extensively throughout the world. Epoxy mortar technology is a proven and accepted method of repairing concrete structures and its longevity in the market is a testament to its success.

Interchem R is the preferred choice over cementitious rebuilds in aggressive sewer environments because of its excellent resistance to chemicals and high resistance to abrasion and wear.

Protecting your underground structures against gas attack is the key to extending the life of your valuable assets. But not all structures will have the same level of deterioration. The appropriate treatment and protection will depend on the overall condition of the structure. As a specialist and experienced pipeline and sewer renewal contractor, Interflow can inspect and assess the condition of your sewer assets and provide you with the appropriate solution.

Interflow has applied Interchem R to rebuild deteriorated surfaces of access chambers, inspection chambers, box sections, benching, sections of large diameter sewers and vortex drop structures of many different sizes, depths and in challenging conditions and locations. Whether your asset is a 2m deep manhole, a 33m deep access shaft or a 3m high chamber 30m below the surface, Interflow has the personnel, products, and expertise to do the job.



Interflow®

Interflow Pty Limited

Sydney - Head Office

254 Toongabbie Road
Girraween NSW 2145, Australia

Ph +61 2 9631 2444
Fax +61 2 9636 5475

Email: mail@interflow.com.au
Website: www.interflow.com.au

New Zealand

18 Anvil Road
Silverdale 0932, New Zealand

Ph +64 9 443 7209

Website: www.interflow.co.nz