

**Interflow**<sup>®</sup>

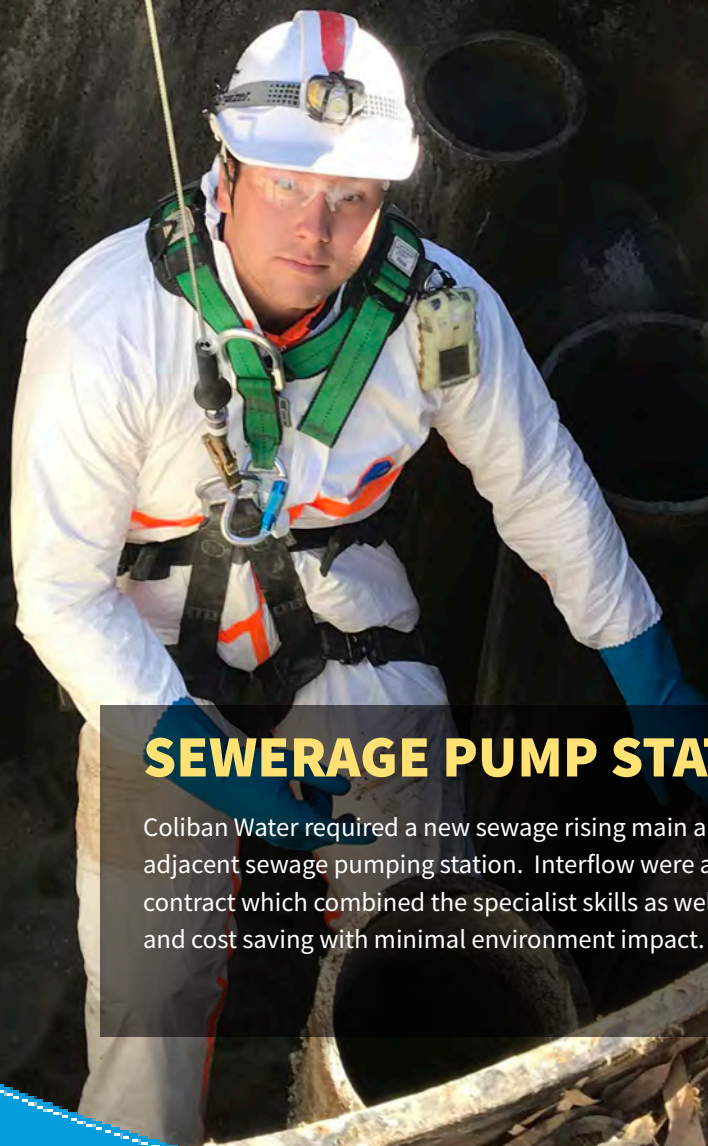
**CUSTOMER**  
Coliban Water

**PROJECT NAME**  
Supply and Install Rising  
Mains and Sewer Pump  
Station Upgrades

**LOCATION**  
Northern Hwy, Echuca VIC

**DELIVERED**  
May 2016

**REFERENCE NO.**  
15-WAS-COLI22



## SEWERAGE PUMP STATION

Coliban Water required a new sewage rising main and refurbishment of the adjacent sewage pumping station. Interflow were able to deliver a single contract which combined the specialist skills as well as delivering on time and cost saving with minimal environment impact.



## THE CHALLENGE:

Coliban Water required replacement of one kilometre of sewer main without interruption to the existing network. This required duplication of the main and carefully planned shutdown and connections to keep the network operating at all times.

## THE SOLUTION:

Interflow were able to install the rising main by Horizontal Directional Drilling rather than dig-and-relay. This not only saved the client money, but reduced environment risk by minimising excavation in a sensitive area.

Sewer expertise with Confined Space Entry needed for precise pump shutdowns, bypass and cut-ins on live assets.



**INTERFLOW DELIVERED A MORE EFFICIENT PIPELINE INSTALLATION SOLUTION COMPARED TO DIGGING AND LAYING**

## THE PROJECT:

The contract called for installation of one kilometre of polyethylene rising main leading to the pump station. Interflow's alternative installation methodology of Horizontal Directional Drilling was accepted by Coliban Water.

Horizontal Directional Drilling minimised the need for excavation, requiring only launch and winch pits at spacings of about 120 metres rather than continuous trenching. As the planned works window coincided with winter and most of the pipeline route was within the open channel of the road, there were risks of the alignment becoming inundated. Minimising excavation was an obvious benefit.

A shutdown of operations at night was required while work was carried out at the pump station. Test shutdown was required to determine holding capacity of the system and a time limit was given to complete the shut down and reconnection.

Internal pumping station pipework was installed or replaced, along with the valve system by Interflow crews.

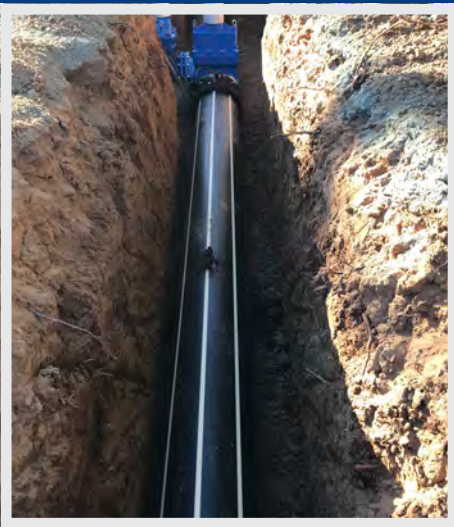
## CONCLUSION:

By proposing a trenchless alternative, Interflow delivered a more efficient pipeline installation solution compared to digging and laying.

Applying the combined skills of Interflow's civil crews along with those of a specialist sub-contractor for the directional drilling component of the sewage pumping station upgrade all under the one contract, meant more efficient project administration for Interflow.

Interflow is committed to offering its customers optimum solutions of the highest value for pipeline rehabilitation.

For more information about Interflow's sewer, stormwater and potable water renewal capabilities, and to find out more about the full range of pipeline services Interflow can provide visit [www.interflow.com.au](http://www.interflow.com.au)



*Installation of polyethylene rising main*