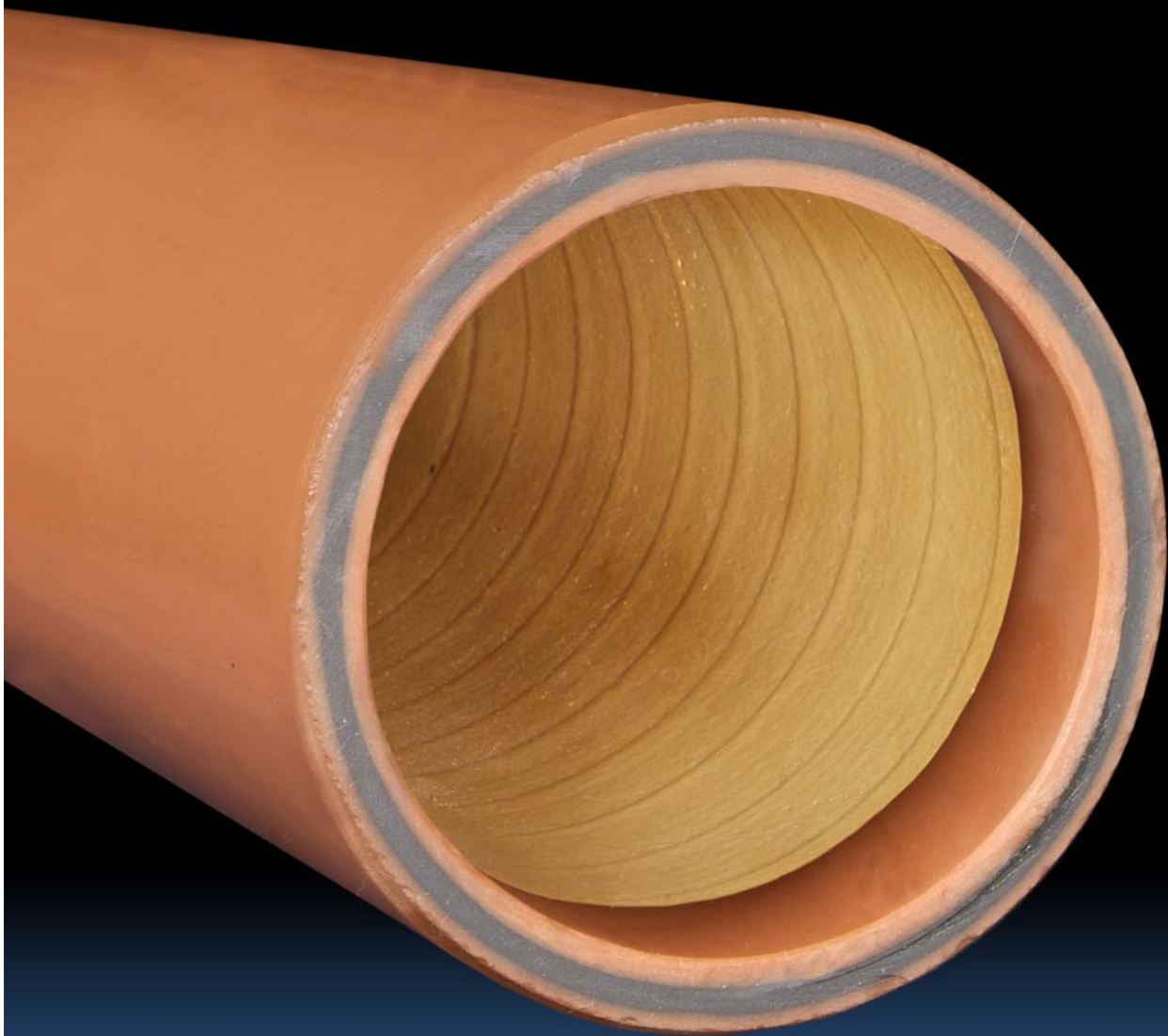


# Interpatch

## Sectional Pipe Repair



# Interpatch

Gravity sewer and stormwater pipes can suffer localised damage in the form of a crack or leaking joint. Although the initial damage may be localised if not repaired the damage can spread and can lead to possible pipeline collapse and environmental degradation.

Interpatch is an effective "no-dig" solution for repairing and sealing damaged sections of pipe. Interpatch is a cost effective alternative to traditional disruptive dig and replace techniques and is recommended if relining the entire pipe is not economical.

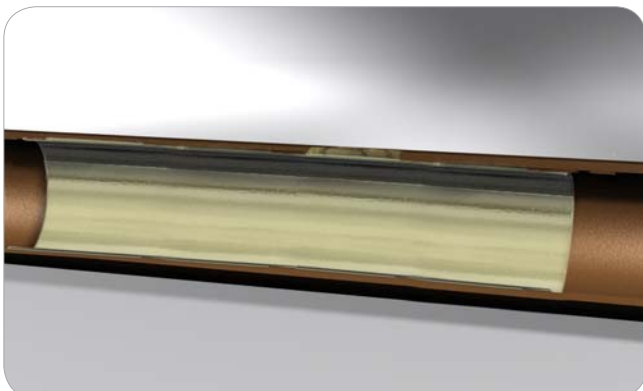
Interpatch consists of glass fibre reinforced matting impregnated with a fast curing resin. The glass fibres give Interpatch high strength and stiffness allowing it to act as a stand-alone structural fitting if required.

Installation is performed by using an inflatable packer to move the Interpatch to the repair location from the nearest manhole. The packers are available in a range of sizes and are fitted with flow through tubes to enable installation during live flows. In most cases this eliminates the need for bypassing and/or the risk of sewerage backing up during installation.

Interpatch can be installed in pipe diameters from 100mm to 750mm and bonds to common pipe materials including PVC, vitreous clay, cast iron, concrete, and asbestos cement.



Fibreglass matting gives Interpatch high strength



## Fast Cure

In common pipe diameters between 100mm and 300mm the resin cures in as little as 45 minutes, even underwater. The faster cure time means installation is quicker, safer, lower risk, and less disruptive to nearby residents and traffic.

In larger pipe sizes the resin offers an optimum balance between fast cure and long pot-life to ensure low-risk, successful installations.

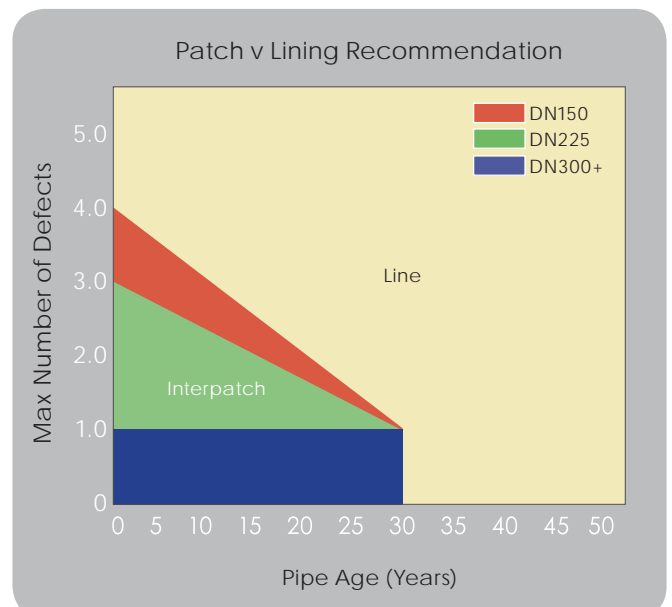
## Structural Fitting

Interpatch has been designed to be a structural component as well as a seal. The glass fibres give Interpatch high strength and stiffness. Interpatch is typically installed with a strength equivalent to that of a stand-alone pipe. The high stiffness means that the strength can be attained from a relatively thin wall.

The thickness and strength of Interpatch is achieved by layering sheets of fibreglass. Therefore Interpatch can be readily tailored to meet a wide variety of situations by selecting the number of layers needed. A standard repair length is 1.2m although longer sections can be repaired by overlaying successive patches.

## Value for Money

Installing an Interpatch to repair a damaged section of pipeline can be an ideal, cost effective solution. However if the pipeline requires several patches and does not have many years of service life left, relining the entire pipe may be more economical and provide better value. Interflow has the expertise and product range to make the appropriate recommendation and offer the client the highest value solution.



Interflow is Australasia's leading pipeline renewal contractor and is committed to providing the market with the highest value products in terms of all round benefit.

Interpatch exemplifies this position with a product that is fast curing and provides a strong, structural fitting and seal. It is the preferred solution to repairing damaged sections of pipe when lining the entire pipeline is not economical.

### The Environment

Interpatch improves the environment by repairing and sealing damaged sections of pipeline, stopping leaks and reducing infiltration into the sewer network, and avoiding unnecessary excavation of the surrounding ground.

The installation can be performed during live sewer flow; reducing the risk of sewerage backing up and overflowing.

Interpatch has been shown to be suitable for long term use in sewer applications without any adverse effect on the environment. The environmental sensitivity extends to the choice of resins. The Interpatch silicate resin contains 50% less fossil fuel based materials than alternative resins.

The resin is supplied to site pre-packaged in either sealed recyclable cartridges or bottles reducing the risk of resin spills, ensuring a safe and clean work site and making disposal easy.



### Community

Interpatch has been developed with sensitivity towards the community in mind.

The equipment required for installation is minimal and is compact enough to be installed from existing access chambers resulting in a small site foot-print and less disruption during installation.

The resin has been developed for fast cure in ambient conditions; reducing the amount of time required for installation.



### Safety

Interflow strongly encourages safe work practices and protecting the safety of the community and our workers is paramount.

Interpatch is a safe product that is easy to install. The resins used are non-toxic and because no excavation is required there is no heavy machinery working on-site.

## Interpatch

Sectional Pipe Repair  
from the Leaders in  
Pipeline Renewal

## Experience

Interpatch is a proven product and Interflow has been successfully installing Interpatch for almost a decade so you can be rest assured that your assets will be repaired by an experienced team of operators.

Effective spot repair solutions are an important component when considering effective sewer renewal. Sewer and stormwater pipes come in a variety of different sizes, lengths, ages and conditions. Knowing whether to perform a spot repair or renew the entire pipeline is dependent on all these factors. When faced with the decision of performing a spot repair or renewing the entire pipeline you can rely on the expertise and experience of Interflow to recommend and provide the most appropriate and best value solution.

## Testing

Interpatch has been comprehensively tested to confirm its material properties, structural properties and long term performance in sewer environments.

- ▶ Interpatch has been tested against relevant ASTM standards for:
  - Tensile strength
  - Adhesion
  - Abrasion resistance
  - Impact resistance
  - Chemical resistance
  - Youngs Modulus
  - Stiffness
  - High Pressure cleaning resistance

With Interflow's commitment to quality, you can be assured that your infrastructure has been repaired to the same standards that we install our liners to.



**Interflow**<sup>®</sup>  
*Leaders in Pipeline Renewal*

### Interflow Pty Limited

#### Head Office

17 Amax Avenue  
Girraween NSW 2145, Australia

**Ph** +61 (0)2 9631 2444

**Fax** +61 (0)2 9636 5475

**Email:** [mail@interflow.com.au](mailto:mail@interflow.com.au)

**Website:** [www.interflow.com.au](http://www.interflow.com.au)

#### Regional offices

Sydney **Ph:** 02 9631 2444

Melbourne **Ph:** 03 9330 1660

Brisbane **Ph:** 07 3890 4554

Perth **Ph:** 08 9221 1988

Auckland **Ph:** +64 (0)9 415 3084